

ALLDAY  
& MILLER



Dorset Close, Hayes, UB4 8NT  
£579,950

3 2 1 D



## Dorset Close, Hayes, UB4 8NT

**£579,950**

- Sought After Three Bed A Type Nash Semi
- Popular North Hayes Location
- Integrated White Goods, Dishwasher, Washing Machine, Fridge Freezer & Mini Pantry
- Walking Distance To All Local Shops / Schools & Amenities
- Three Spacious Bedrooms
- Extended Kitchen With Underfloor Heating
- Stunning Condition Throughout
- Rear Annexe / Gym
- Ground Floor Shower Suite & First Floor Bathroom
- Brilliant Bus Links

## Description

This home boasts three generously sized bedrooms, each with ample natural light and storage space. The bedrooms provide a peaceful retreat for relaxation and rest. The property features a well-planned rear extension that significantly expands the living space. This versatile extension can serve as a family room, home office, or even a dining area, offering a seamless transition between indoor and outdoor living. The ground floor of the house has been cleverly designed to create an open-plan living area that includes the extended space, a spacious living room, and a modern kitchen with underfloor heating. This open layout encourages interaction among family members and guests, making it perfect for entertaining. The kitchen is a highlight of the home, featuring contemporary fixtures and high-quality appliances. It is not only functional but also aesthetically pleasing, with ample countertop space and storage for all your culinary needs along with a utility cupboard. The property is equipped with a modern and well-appointed bathroom, offering both convenience and relaxation with its stylish fixtures and fittings. The property includes off-street parking for multiple vehicles, ensuring that parking is never a hassle for you or your guests.

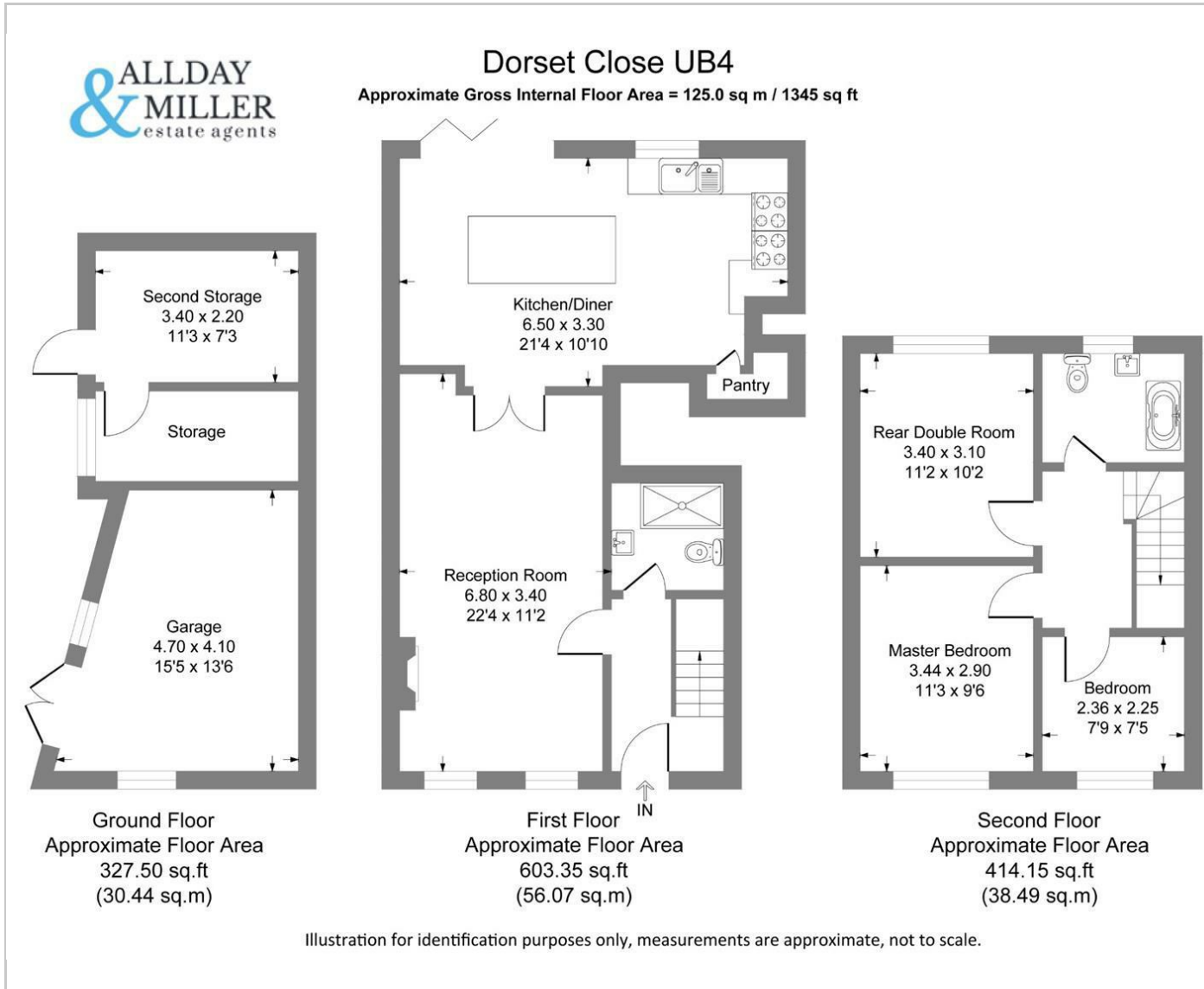
Step through the bi-folding doors from the extension onto a well-maintained and private garden. This outdoor space provides an ideal setting for outdoor dining, gardening, or simply enjoying the fresh air with family and friends. The garden is home to a newly built outhouse which is a perfect place for a home office or extra storage space.

## Situation

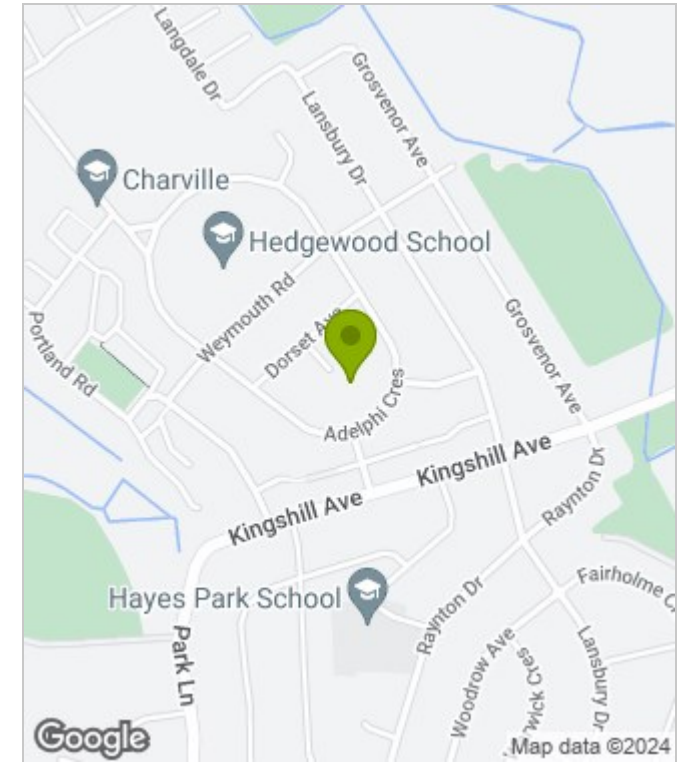
Situated in a tranquil cul-de-sac within a prestigious area of North Hayes close to favoured schools, a vibrant shopping parade and transport links for Northolt, Ealing, Southall, Heathrow, Uxbridge and Hayes Town (Hayes & Harlington station with Cross Rail now open). This property offers a perfect balance between urban convenience and suburban serenity.



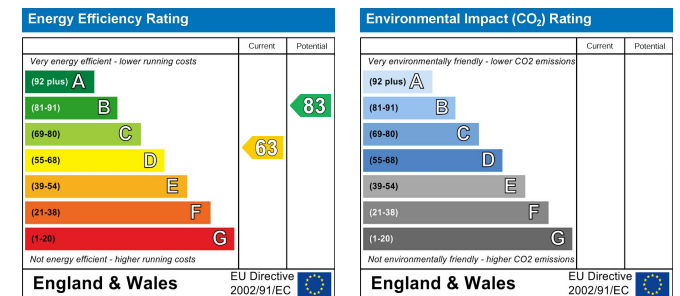
## Floor Plans



## Area Map



## Energy Performance Graph



These particulars, whilst believed to be accurate are set out as a general outline only for guidance and do not constitute any part of an offer or contract. Intending purchasers should not rely on them as statements of representation of fact, but must satisfy themselves by inspection or otherwise as to their accuracy. No person in this firm's employment has the authority to make or give any representation or warranty in respect of the property.